

Waneta Expansion  
PROJECT

# Project Presentation



# Waneta Expansion Project – Contractor

## Contractor



## Sub-Contractors

***ASL • JV***

**VOITH HYDRO**

Waneta Expansion  
PROJECT

# Waneta Expansion Project – Partnership Structure

The logo for Fortis Inc. features the word "FORTIS" in a large, blue, serif font. The letter "O" is replaced by a stylized yellow and orange wave icon. To the right of "FORTIS" is the word "INC." in a smaller, blue, sans-serif font.

**FORTIS** INC.

**51%**

The logo for Columbia Power Corporation features the words "COLUMBIA" and "POWER" stacked vertically in a black, serif font. The letter "A" in "COLUMBIA" is replaced by a green tree icon, and the letter "O" in "POWER" is replaced by a blue wave icon. Below the text is a horizontal bar with "CORPORATION" in white, sans-serif font on a green background.

COLUMBIA  
POWER  
CORPORATION

**32.5%**

The logo for Columbia Basin Trust features a stylized green mountain range with a blue river winding through it. Below the graphic is the text "COLUMBIA BASIN TRUST" in a blue, sans-serif font, and the tagline "a legacy for the people" in a smaller, italicized, blue, sans-serif font.

COLUMBIA BASIN TRUST  
*a legacy for the people*

**16.5%**

Waneta Expansion  
PROJECT

A decorative graphic at the bottom of the slide consisting of several overlapping, wavy lines in shades of blue and teal, creating a sense of movement and water.

# Artist's Conception of Project

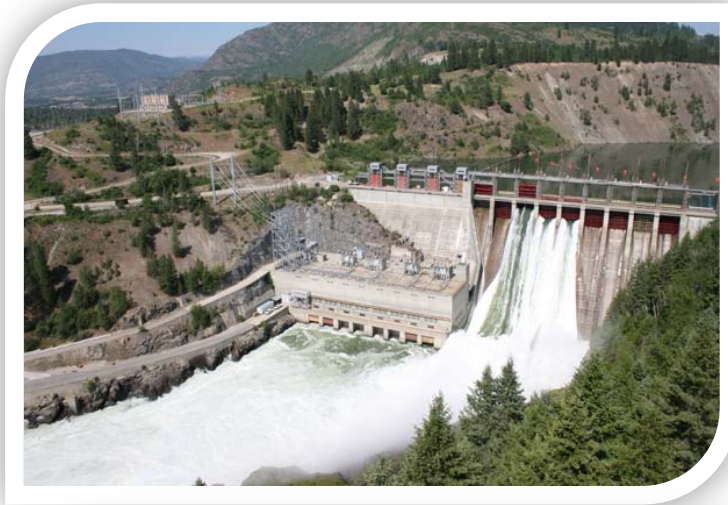


- The construction of an additional powerplant immediately downstream of the existing Waneta Dam
- Permitted for 335 MW
- BC Hydro will purchase energy from the project
- FortisBC will purchase capacity from the project
- Columbia Power is manager for project construction

**Waneta Expansion**  
PROJECT

# Environmental Benefits

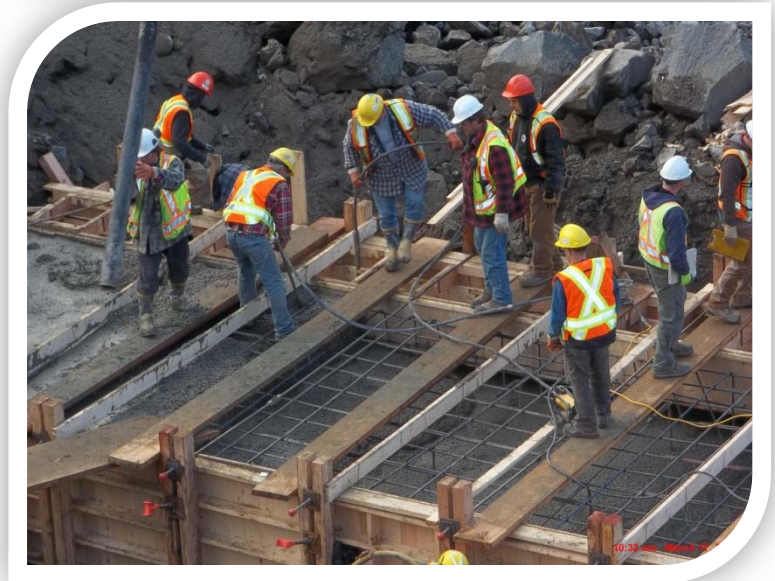
- Project will use water that, on a seasonal basis, would otherwise be spilled
- Producing hydroelectricity will reduce greenhouse gas emissions that would otherwise be created by the generation of electricity through the burning of fossil fuel
- Fish species benefit from increased habitat productivity upstream
- Reduction in Total Gas Pressure (TGP) downstream by passing water through a turbine instead of over a spillway
- Decreased fish mortality, as fewer fish are passed over the spillways



Waneta Expansion  
PROJECT

# Socio-Economic Benefits

- Creation of over 400 jobs — it is anticipated that approximately 85% of the workforce will come from within a 100km radius of the project
- Close to \$200 million will be paid in wages and benefits
- Equity and First Nations hiring provisions
- Apprenticeship opportunities
- Continual hiring
- Local purchases of goods and services



**Waneta Expansion**  
PROJECT

# Socio-Economic Benefits, continued

Project	Employment Income	Regional Spending
Arrow Lakes Generating Station	\$29.3 million to workers	\$25.6 million
Brilliant Expansion Project	\$51 million to workers	\$52 million
Waneta Expansion Project	Approximately \$200 million in wages and benefits to workers	Expected to exceed \$178 million

Waneta Expansion  
PROJECT



# Allied Hydro Council/Columbia Hydro Constructors Collective Agreement

## Trades Associated

- Boilermakers
- Bricklayers
- Carpenters/Lathers
- Cement Masons
- Drillers
- Drywallers
- Electrical Workers
- Elevator Construction
- Floorlayers
- Glaziers
- Insulators
- Ironworkers
- Labourers
- Millwrights
- Office and Technical
- Operators
- Painters
- Piledrivers – Divers
- Plasterers
- Plumbers and Pipefitters
- Quality Control
- Refrigeration
- Sheet Metal
- Teamsters
- Tilersetters
- Terrazzo Workers

Waneta Expansion  
PROJECT

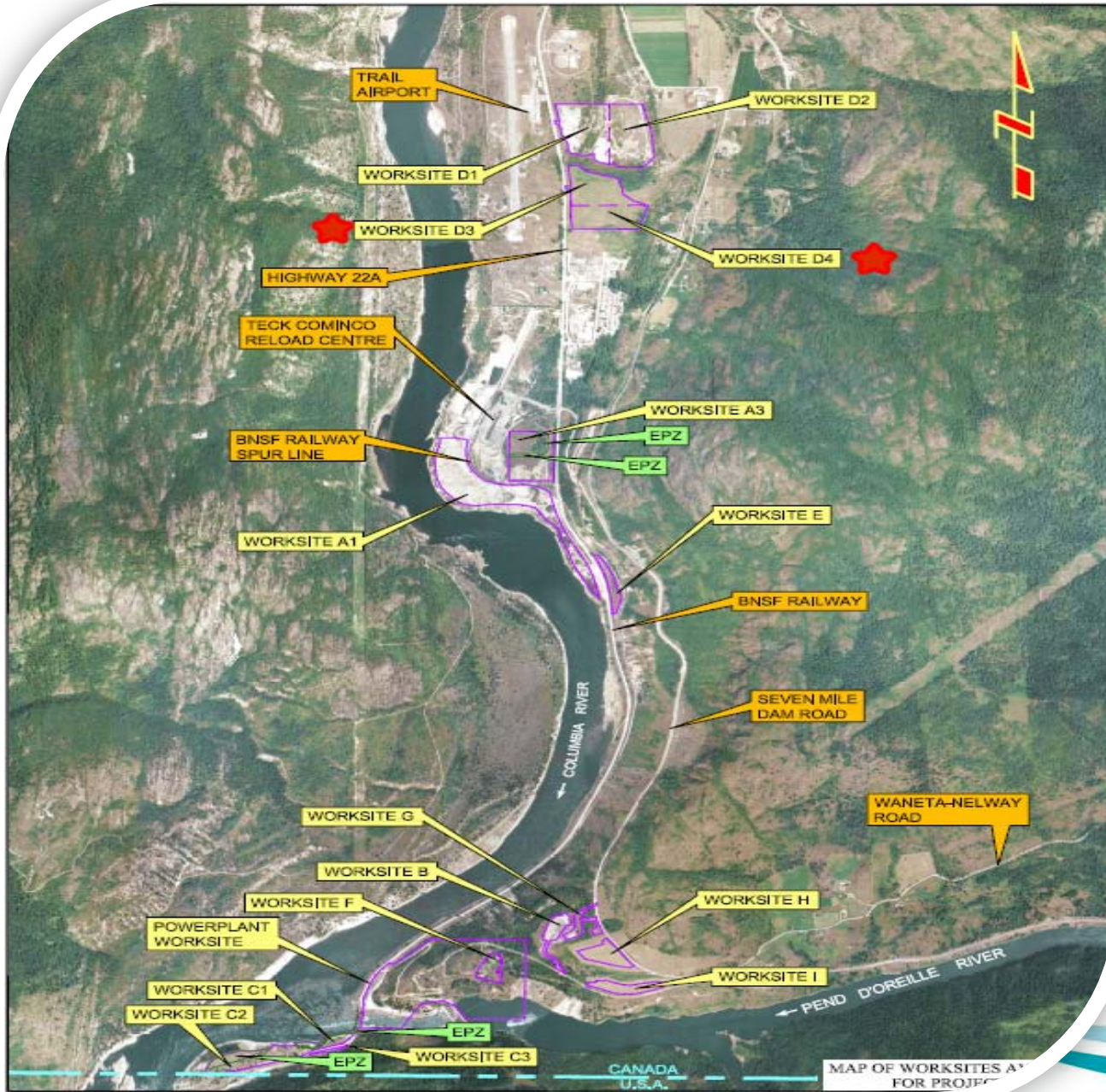


# Community Impact Management Committee

- Committee made up of representatives from local government and the communities of greater Trail, Montrose and Fruitvale, the contractor and owners
- Acts as a conduit between the owners, contractor and communities
- Ongoing liaison to encourage positive community impacts and benefits, and relay concerns resulting from the construction of the project.
- Will assist the Socio-Economic Monitor in the development and selection of the indicators that will be used to measure the social and economic effects, both positive and negative, of the project
- Monthly meetings will rotate between Montrose, Fruitvale and Trail for the duration of the project



# Available Worksite Areas



# Worksite Offices



# General Arrangement of Project



# Aerial View of Site Prior to Construction

