

Invitation to Open House '04

Brilliant Expansion Power Corp. (BEPC) hosted community meetings at Passmore Hall in '02 and Winlaw Hall in '03 to discuss its proposal to place 25 rainbow trout habitat enhancement structures at nearby, biologically selected sites in the Slocan River (*Option A*). Feedback from those meetings has led to development of a "fewer structures plus riparian" alternative (*Option B*), and further consideration of lake fertilization (*Option C*). To learn more, you are encouraged to re-visit either of the halls to participate in our 2004 Open House(s):

Winlaw Hall – Wed., June 9, 7 - 9 p.m.
Passmore Hall – Thur., June 10, 7 - 9 p.m.

The comments and support obtained at this Open House will help determine the final enhancement program to be submitted for approval to DFO.

What we've been doing ...

Support for trout habitat enhancement has been evident at Valley meetings. At Winlaw, however, despite no known problems elsewhere, views were expressed that proposed *Option A* represented a significant hazard to recreational tubers.



Streamkeepers at Site 1+050E that will be used to demonstrate structures and riparian restoration if *Option B* is chosen

Other comments, voiced most clearly by members of Slocan River Streamkeepers, challenged BEPC to

Brilliant Expansion Project Update

Recent construction has been "out of sight" occurring underwater, underground, and behind as the project's temporary steel berm.

The underwater work downstream of the berm will maximize power benefits but is designed as well to create a small eddy for sturgeon. The work proceeding underground has established vehicle access between the construction road and dam, and continues on the 12 m diameter tunnel that will deliver water to the new powerhouse. Behind the berm, powerhouse excavation has resumed following some delay due to water leakage.

Power generation will begin in summer 2006.

consider other holistic eco-system enhancement measures such as education and riparian zone protection and improvement.

To weigh all comments and to provide additional opportunity for community and agency input, BEPC held a one-day Issues Workshop on November 29, 2003, to which Streamkeepers, recreational representation, First Nations and regulatory agencies were invited. For effective near-term habitat enhancement, no alternatives to in-stream structures could be identified. Participants concluded, however, that establishment of a successful riparian program should enable BEPC to meet its on-going *Fisheries Act* obligations with a reduced number of structures (*Option B*).

The workshop recommended that the *Option A* structures eliminated in *Option B* be those nearest Winlaw rapids where tubing activities are greatest. A second workshop and field trip was held April 24, 2004, to review designs, installation methodologies and, where possible, stream bank re-vegetation for those structures that will remain. As well, discussion began on delivery models for *Option B*'s community-based riparian restoration component.

Possible Riparian Program

Being developed in partnership with Streamkeepers, the goal of the *Option B* riparian component will be to provide long-term fish habitat based on criteria specific to the Slocan River. This riparian improvement initiative would be funded from the annualized savings BEPC would expect to realize from being able to build, maintain, and monitor a reduced number of habitat enhancement structures.



Bio-engineering techniques (willow shoot layering) being used to rehabilitate a stream bank near Edgewood, B.C.

To maximize the effectiveness of available funds, the program would contribute to out-of-pocket costs (through an application and approval process) of shoreline owners willing to restore and rehabilitate their impacted riparian properties. Such costs would include plants and materials, equipment and supplies and technical advice. As a community-based program, labour would not in general be covered.

A committee comprised of BEPC, Streamkeepers, and potentially other experts, would evaluate and approve applications according to the habitat benefits expected. If under-subscribed in a given year, remaining program funding would be added to available funding in future years.

As presently envisaged, the program would continue on a five-year renewable basis. At the end of five years, a detailed assessment would be undertaken of the work completed and the benefits realized. Based on this assessment, it is expected DFO would approve or reject the program as existing or modified. If not continued, it is expected that funding for this component of the program would be transferred to *Option C*.

Our Options Summarized

To compensate for possible fish entrainment mortality associated with operation of the Brilliant Expansion Project, DFO has issued a *Fisheries Act* authorization requiring BEPC to create 250 sub-adult and adult rainbow trout, preferably via Slocan River habitat enhancement. Compensation options, detailed in this and previous newsletters, are summarized following. Community preference will be a factor in the option that DFO will approve:

Option A – Full Structure Program

This original proposal, which has received DFO's approval as biologically acceptable, would see the placement of 25 habitat structures in-stream over a 1 km distance below Winlaw rapids. Structure types and locations were detailed in our Newsletter #2.

Option B – Reduced Structures & Riparian Program

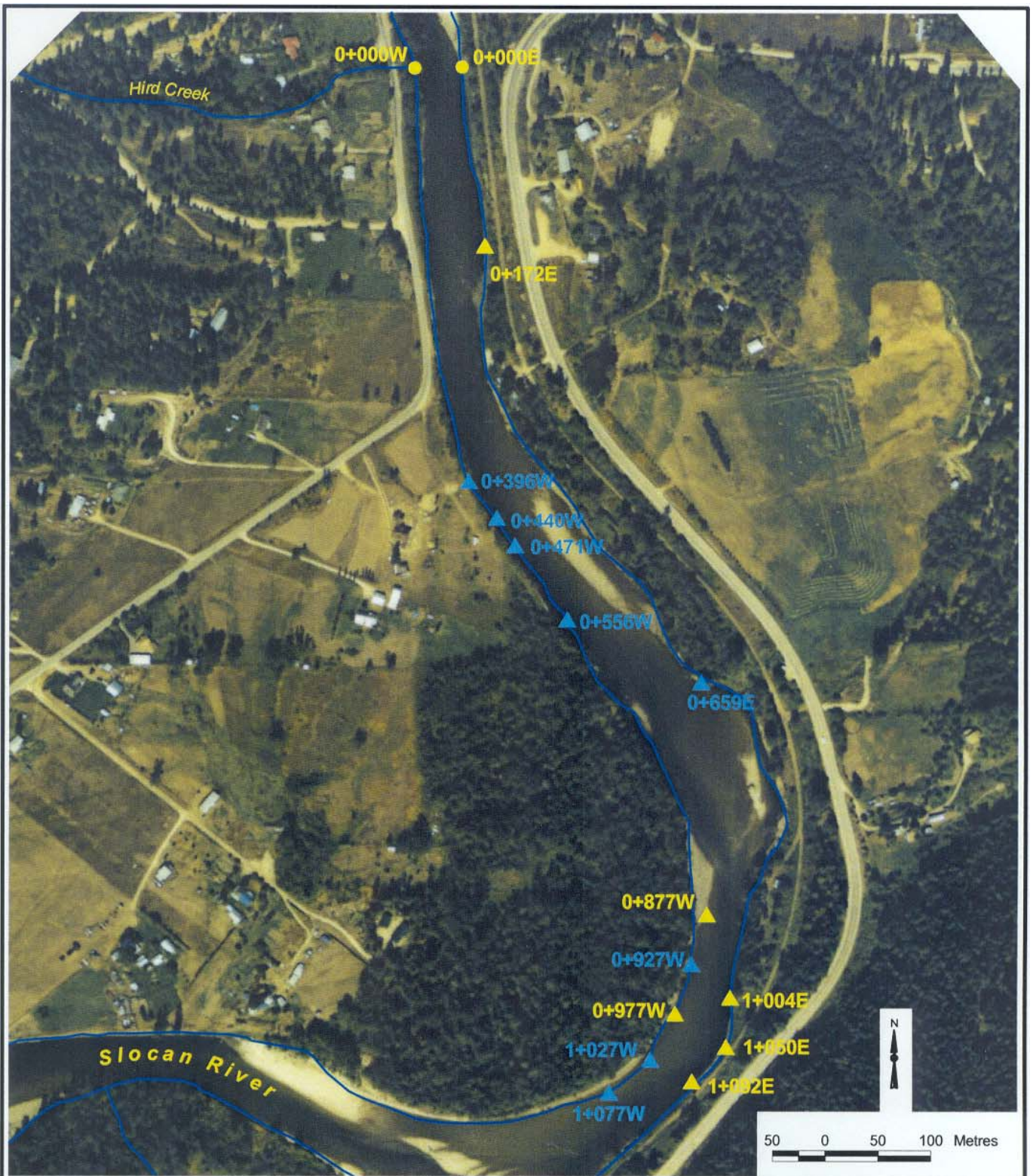
Developed in consultation with Slocan River Streamkeepers and other parties, this option would incorporate a riparian restoration component as described in this newsletter to reduce the in-river structural component. Fifteen structures would be located along channel margins beginning 360 m downstream of the Winlaw rapids (see Attachment). Year 1 of this work would see six of the structures installed to demonstrate their effectiveness and confirm their compatibility with recreational tubing.

Option C – Off-site Fertilization Program

If *Options A* or *B* are unacceptable to Slocan Valley residents, or are not approved by DFO, or if fish enhancement targets established for them are subsequently not met, then off-site compensation in the form of additional Kootenay Lake fertilization will be implemented.

For more info or to comment on options, contact:

Mr. Wally Penner or **Mr. Llewellyn Matthews**
Columbia Power Corporation
445 – 13th Avenue
Castlegar, BC V1N 1G1
Tel: (250) 365-8585 Fax: (250) 365-8537



LEGEND

- River / Stream
- Survey Bench Mark
- ▲ Habitat Enhancement Structures for 2004 - Phase 1
- ▲ Habitat Enhancement Structures for 2005 - Phase 2

REFERENCE

Datum: NAD 83
 Projection: UTM Zone 11

Mapping information shown are approximate representations and should only be used for reference purposes. Golder Associates is not responsible for any errors or omissions on this map.

PROJECT **Brilliant Powerplant Expansion Project**
Slokan Rainbow Trout Habitat Enhancement Program

TITLE **Winlaw Site - Proposed Enhancement Structure Locations OPTION B**



PROJECT No. 03-1450-043		SCALE AS SHOWN	REV 0
DESIGN	EL 14 Apr. 2004		
GS	EL 14 Apr. 2004		
CHECK	LW 14 Apr. 2004		
REVIEW	LW 14 Apr. 2004		

FIGURE C1