

Community Preferred Proposal Accepted

Fisheries and Oceans Canada (DFO) has accepted Brilliant Expansion Power Corporation's (BEPC's) revised entrainment mortality compensation proposal for the Brilliant Expansion Project. The proposal, which originally consisted of 25 in-stream habitat structures, was revised following a series of public meetings and workshops with the Slocan River Streamkeepers, recreational groups, fisheries agencies and First Nations representatives. The revised proposal was submitted to DFO after residents who attended open houses last year showed overwhelming support for 'Option B', which involved a reduction in the amount of in-stream habitat structures and the addition of a riparian restoration program, as reported in Newsletter #5.

The in-stream structure component will eventually consist of fifteen structures located along channel margins of the Slocan River downstream of the Winlaw Rapids, to be constructed in two phases. Phase One will be a demonstration of the various types of structures.



Phase One begins in February

Phase One involves the construction of six structures (see attachment). Permits have been received under the *Navigable Waters Protection Act* and the *BC Water Act*. Boulders and root wads, required for structure construction, were delivered to the project site last fall. The contract for construction has been awarded to Sorenson Excavating Ltd. of Castlegar. Equipment will be mobilized at the project site in early February with structure installation to be completed by the end of March to minimize the impact on the aquatic environment.

During installation, these measures will be implemented to mitigate potential environmental impacts:

- Environmentally sensitive hydraulic fluid will be used in equipment working in-stream;
- Work will be conducted from the banks and dry portions of the river to the maximum extent possible;
- Swamp mats will be used, where possible, to keep equipment out of the water;

Brilliant Expansion Project Update

Construction work at the 120 MW Brilliant Expansion Project is proceeding with the completion of the water, access and service tunnels. The intake channel excavation continues and a 4 metre plug of rock is being left in place to hold back the Kootenay River until the powerhouse is complete.

A second smaller crane has also been erected to assist with the powerhouse construction. Draft tube forms have been lowered into place in the bottom of the excavation and rebar and concrete placement continues. Approximately one-third of the 19,000 cubic metres of concrete required has been poured. As well, clearing for the transmission line that will run from the new powerhouse to the Brilliant Terminal Sub-station has begun.

There are approximately 200 workers on site, 80% being local residents. To date, the project has injected over \$20 million into the region's economy through local expenditures.

In-service operation is scheduled for fall 2006.

- A spill response plan is being developed and spill response equipment will be kept on site;
- Measures will be undertaken to minimize siltation;
- Disturbed areas on the streambank will be restored.

A preliminary evaluation of the six structures will be conducted this summer to determine if they are likely to be effective. A decision will then be made on whether to go ahead with the Phase Two installation in 2006. The evaluation will consist of a fish-use assessment of the structures to determine if fish are starting to use the structures. A recreational use assessment will also be conducted to determine if the structures are having an unacceptable impact on recreational river users. The public will be advised of the outcome of the evaluation program.

><(((0> ><(((0> ><(((0> ><(((0>

Improving Fish Habitat

The in-stream structures, incorporating woody debris (logs) and boulders, will provide immediate fish habitat. Over the long-term, the riparian component of this project will provide important river shade and provide a source of large woody debris needed to create habitat structure for rainbow trout and other fish species.

Complementing the In-Stream Structures with a Riparian Program

The riparian restoration program, developed in consultation with the Slocan River Streamkeepers, is focused on supporting private landowners and community-based efforts to protect and rehabilitate riparian areas on the Slocan River. The program area includes the entire Slocan River.

Financial support by BEPC of \$20,000 per year will provide funding to public groups and landowners to support a program of riparian restoration projects. A steering committee will be established to help provide guidance to the program. The steering committee will include representatives from the Streamkeepers, BEPC and fisheries agencies.

The Streamkeepers have agreed to act as the community liaison for the program as this program complements their mandate and other activities.

Each project will be monitored at regular intervals. There will be a detailed evaluation of the entire program in 2010 to assess whether there have been clearly demonstrated improvements in riparian function.



Members of the Streamkeepers met with BEPC last fall to develop the Riparian Program

Eligible Riparian Projects

Eligible projects would protect, restore or enhance a riparian zone with a minimum width of 10 to 50 metres and include such activities as:

- Tree and Shrub Planting
- Protection of existing riparian vegetation
- Fencing to exclude livestock from riparian areas
- Provision of off-site livestock watering areas
- Stream bank protection works that include a vegetation treatment

Funding for projects could be requested to cover the purchase of materials (e.g. plants, fencing material), rental or contracting of any special equipment, specialty consulting services for planning and design, and hired labour.

Project proposals will be evaluated by the Steering Committee, which will provide recommendations to BEPC. One important aspect that will be considered is the proponent's long-term commitment to the project.

Submission of Riparian Project Proposals

Landowners or groups interested in restoring or rehabilitating their riparian properties are invited to submit proposals to BEPC.

Application forms will soon be available with project proposals being accepted until March 31, 2005. At that time, the proposals will be evaluated and prioritized for funding

acceptance in April. Applications received after March 31st may still be considered for funding this year if unallocated funds remain in the budget, or applications may be held over to the following year.

If you are interested in submitting a proposal, please contact either Columbia Power Corporation or the Slocan River Streamkeepers.

Contact Information...

Wally Penner or Llewellyn Matthews

Columbia Power Corporation

445 -13th Avenue

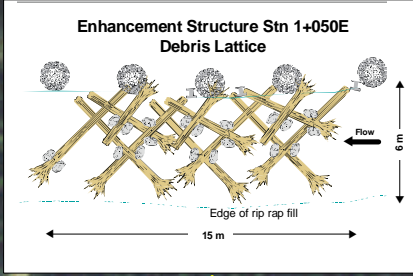
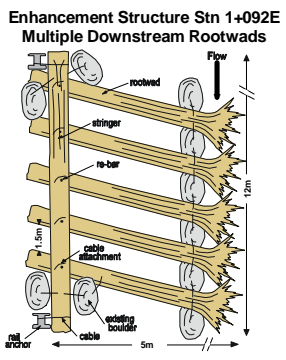
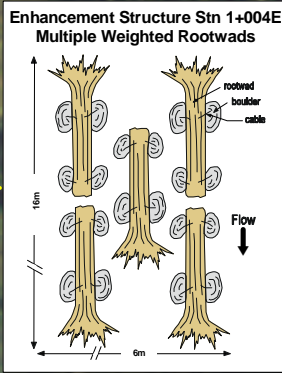
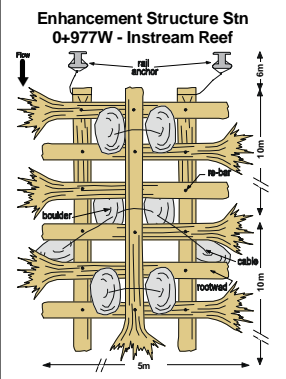
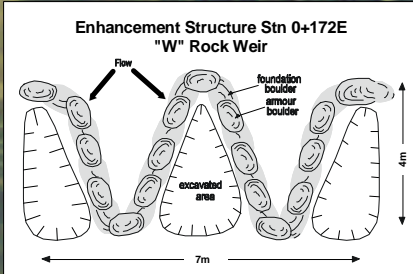
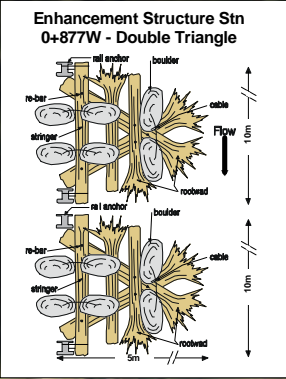
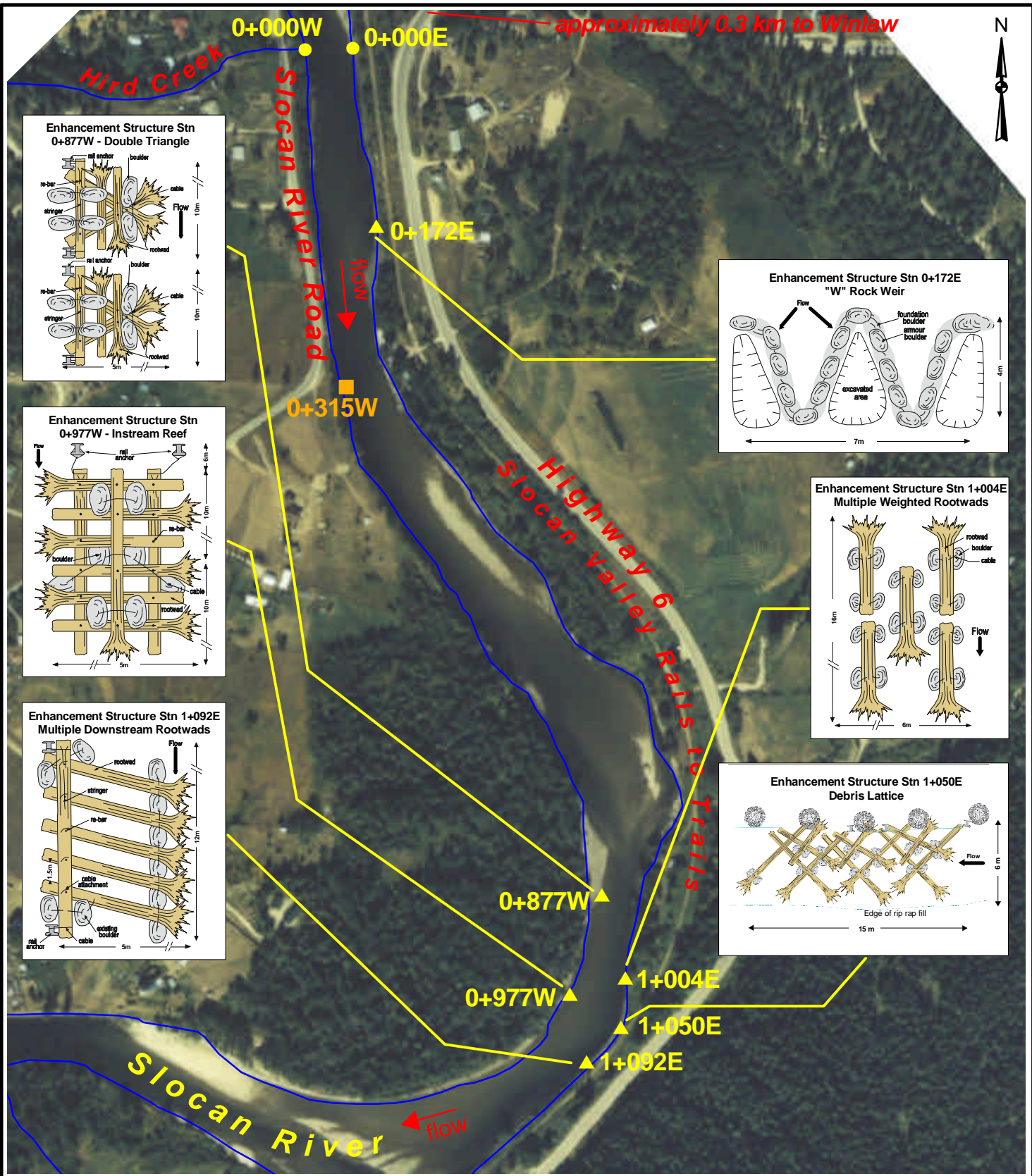
Castlegar, BC V1N 1G1

Tel: (250) 365-8585 Fax: (250) 365-8537

Slocan River Streamkeepers

Box 125, Winlaw, BC V0G 2J0

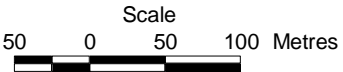
Email: streamkeepers@netidea.com



LEGEND

- River / Stream
- Survey Bench Mark
- Habitat Structures - Phase 1 (Demonstration)
- Winlaw Rapids recreational egress

Structure design by G.G. Oliver and Associates, Cranbrook. Drawings by Kevin Franck and Associates, Cranbrook.



REFERENCE

Datum: NAD 83; Projection: UTM Zone 11

Structure locations approximate for reference only.

PROJECT
Brilliant Powerplant Expansion Project
Slocan Rainbow Trout Habitat Enhancement Program
 – Habitat Structures Component

TITLE
Phase 1 Structure Locations

PROJECT No. 04-1480-049			SCALE AS SHOWN	REV. 0
DESIGN	BE	10 Aug. 2004	Newsletter No.6 Attachment	
GIS	BE	10 Aug. 2004		
CHECK	LW	10 Aug. 2004		
REVIEW	LW	10 Aug. 2004		

